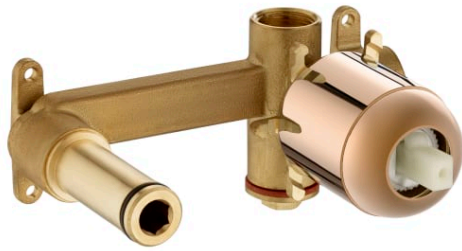
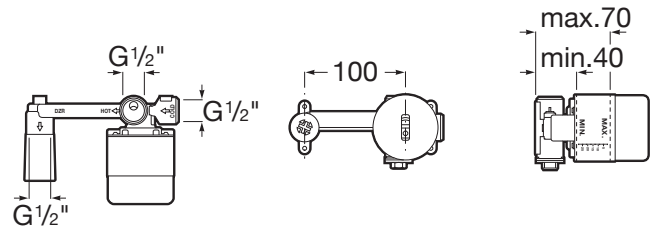


CALA

Built-in basin mixer



TECHNICAL DRAWINGS



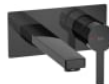
FEATURES

- Application place: Basin
- Installation type: Built-in
- Type of cartridge: Ceramic
- Water connection thread:  $1/2''$

## COMPATIBLE WITH

**Built-in basin mixer**

5A353A..0

**Concealed single lever basin mixer**

5A3596..0

## Cala

A cylindrical and slim body of only 38 mm and a flat rectangular handle, in perfect harmony with the shape of the spout, are the essence of Cala's design. The ultimate blend of visual elements to create the best proportion and style.



### INSTALLATION AND USER MANUALS



[PDF](#) [Installation handbook](#)